

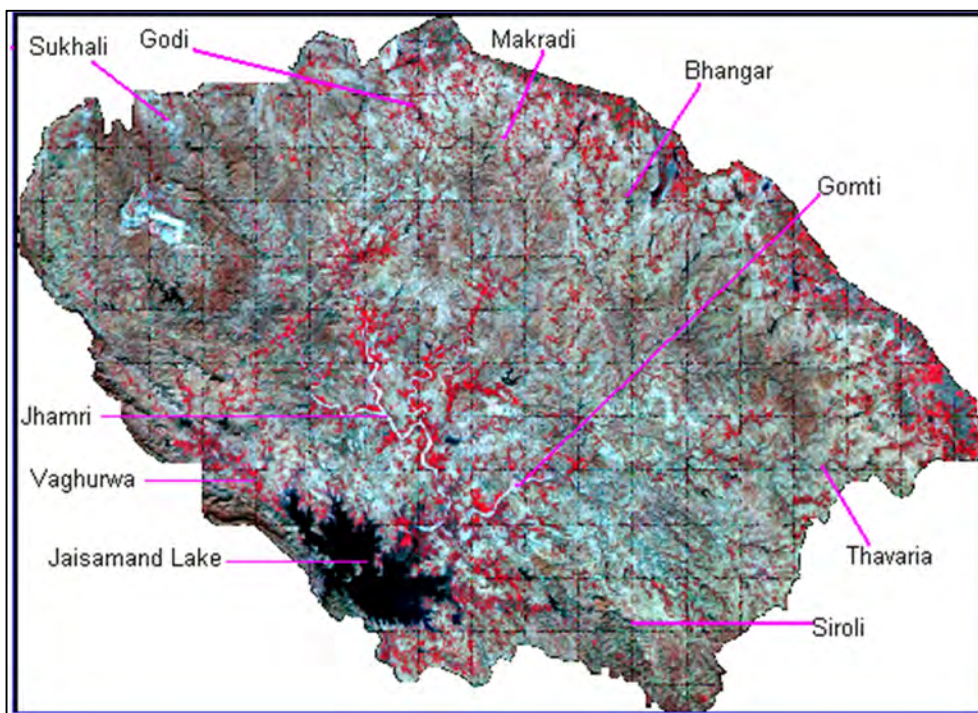
Mainstream initiatives of supporting PRIs and local institutions to leverage the flagship schemes (MGNREGA) for sustaining natural resource based livelihoods

## PROJECT COMPLETION REPORT

Submitted to

**THE FORD FOUNDATION**

Grant Number: 124313



Submitted by



### SOCIETY FOR PROMOTION OF WASTELANDS DEVELOPMENT

**Head office**  
14A, Rouse Avenue Lane  
Vishnu Digamber Marg,  
ITO, New Delhi  
011 – 23236387, 23236440  
[ho@spwd.org](mailto:ho@spwd.org)

**Regional office**  
95, Garib Nawaz Colony,  
New RTO 100 ft Road, Behind DPS School,  
Udaipur – 311 001; Rajasthan  
[wro@spwd.org](mailto:wro@spwd.org)  
+91 99289 10051

[www.spwd.org](http://www.spwd.org)

## **The MGNREGA**

MGNREGA as a programme was rolled out in three phases. Introduced in 200 rural districts in its first phase (2 February 2006), in its second phase, 2007-08, it was extended to an additional 130 rural districts. The remaining districts were notified under MGNREGA with effect from 1 April 2008. Effectively, this is the 15th year of its operation, and currently the programme operates in 691 districts in the country.

MGNREGA's primary goal was Social protection for the most vulnerable people living in rural India through providing employment opportunities. MGNREGA explicitly aimed to create durable assets including drought-proofing and flood management, and aid in the empowerment of the marginalised. The programme also aimed to strengthen decentralised, participatory planning and panchayati raj institutions (PRIs) for deepening democracy at the grassroots, while fostering greater transparency and accountability in governance. Implementation of the NREGA in consonance with the effort in planning moreover is the planning exercise also done keeping in mind the local ecological conditions and the local communities engagement with their natural surroundings. For NREGA to realize its full potential it is imperative to look at the local ecological conditions as also address the issue of convergence with other development programmes.

Thus, while it adopted a demand-driven approach with a guarantee, it included several additional components (as compared to EGS – Maharashtra) meant to strengthen entitlements, ensure transparency and promote an explicitly bottom-up approach.

Gram Panchayats (GPs), for example, were accorded an active role. At least 50% of the works in terms of cost would be implemented by the GP. The shelf of works was to be decided at the Gram Sabha in order to reflect the priorities of the community. Locally, a team of functionaries included the Gram Rozgar Sahayak / Field Assistant, a Technical Assistant to measure the work, and a Computer Assistant to maintain records offered support for the implementation of the programme.

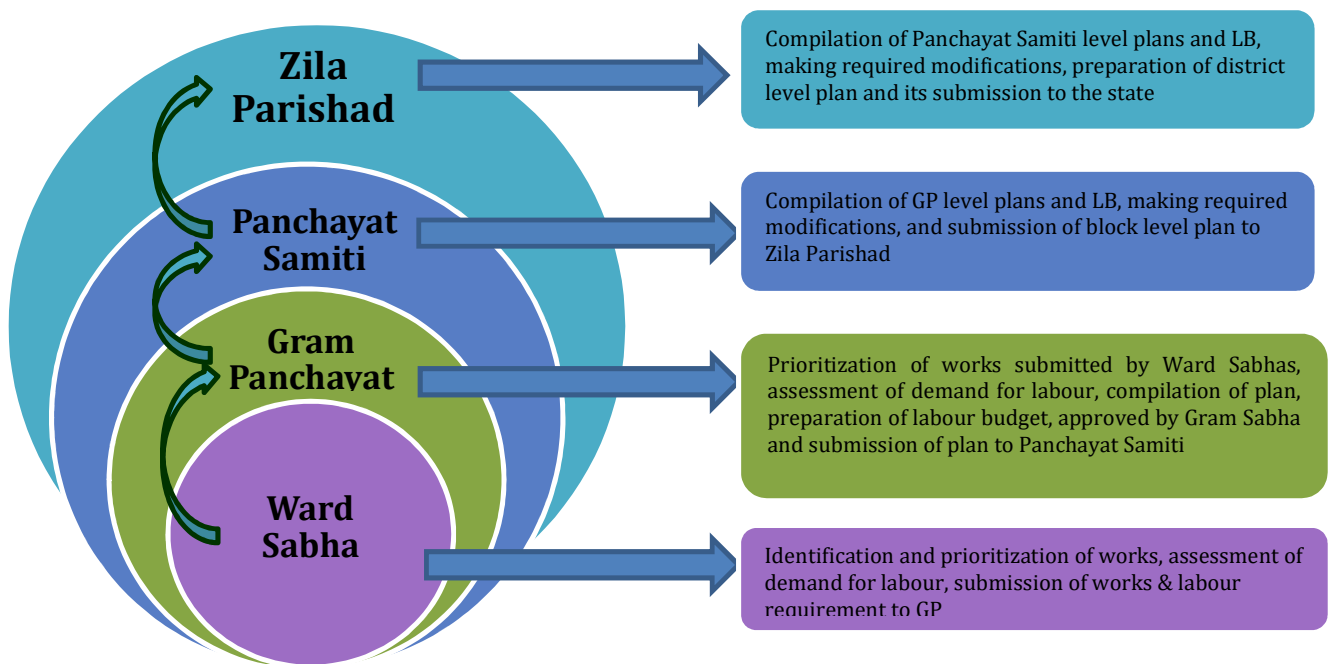
In terms of transparency a websites provide real time data on a large number of parameters associated with implementation. Assets created have since been geo-tagged with before-after pictures and so on. Perhaps uniquely, the programme built in provisions for twice a year social audits, where people audit the programme. These involve public verification of muster rolls and other expenditure in a Gram Sabha, and can involve workers as well as civil society organisations. This allows not just an important feedback and accountability mechanism but also provides a platform for civil society to engage with the programme.

It is easy to see that MGNREGA is complex, designed to achieve a number of goals at once, demanding close coordination across departments and layers of administration. All this while also attempting to build in robust and durable accountability structures. Successful

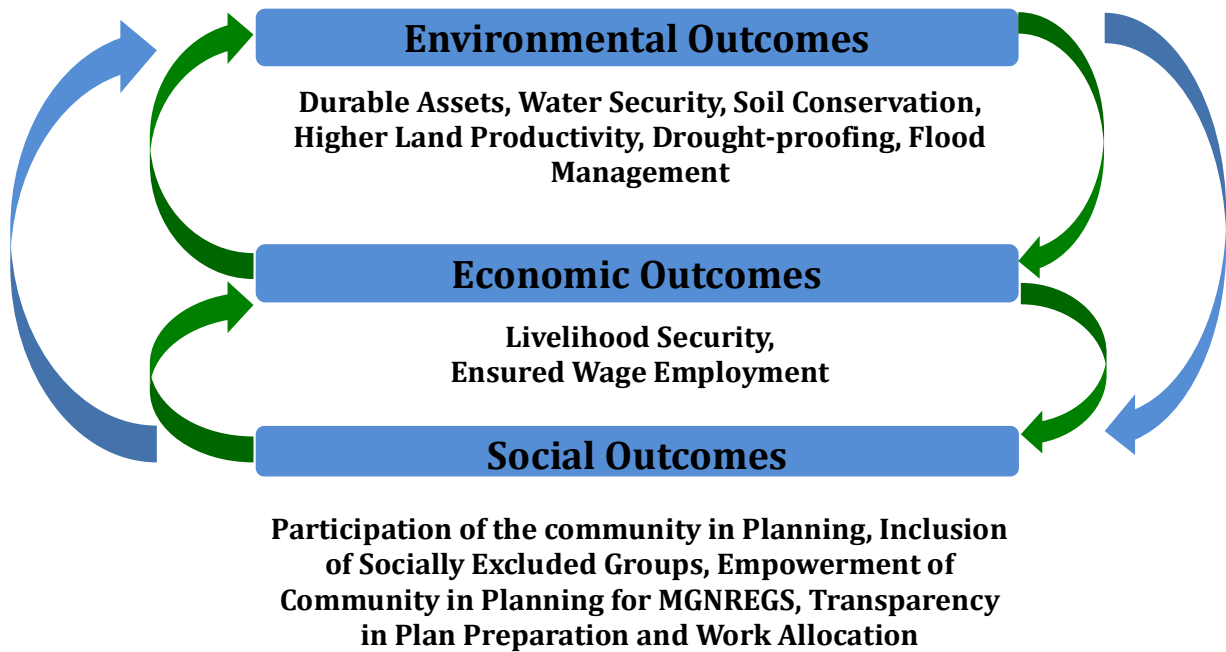
implementation of MGNREGA depends crucially on staff capacity at various levels. Thus, although the programme has a national character, it varies substantially across states in the effectiveness of implementation. States also have innovated in different ways, drawing on the Act but framing their own rules beyond the legislation. MGNREGA has not been static over time. It has been evolving as a programme, not always necessarily for the better.

### Planning Procedures under MGNREGA

MGNREGA is a demand-driven public wage employment programme where works are opened up and jobs offered whenever there is a demand for work. To record demand, a prior assessment of the quantum of work likely to be demanded needs to be ascertained, along with the anticipated timing of the demand. Concurrently, a shelf of projects is required to be prepared and prioritized in order to meet this demand. Matching demand and supply and its planning is the responsibility of MGNREGA, which is to be achieved through the preparation of a Labour Budget (LB). The LB thus covers two aspects viz. (i) assessment of quantum and timing of demand for work and (ii) preparation of a shelf of projects to meet the demand for works within the time prescribed in the Act. The LB and the Annual Action Plan of works are to be prepared by the State Government and submitted to Central Government according to the yearly planning schedule that is dated from 15th August to 15th February. LB should emerge from an integrated plan for local development with focus on NRM; especially on a micro-watershed basis so that sustainable livelihoods are created.



## Plan should be Outcomes Focused

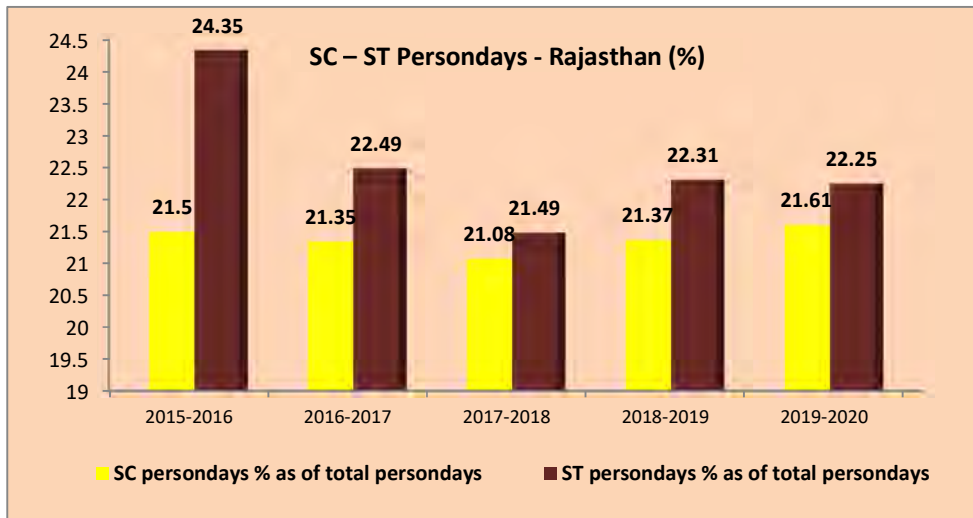


### Reach, Benefit, Empower

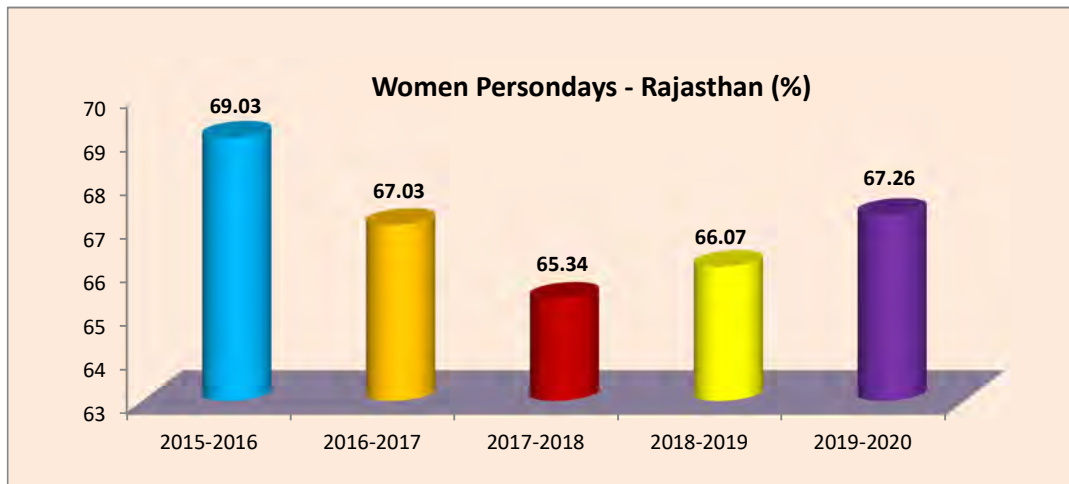
In judging the impacts of interventions, one can distinguish three types of programmatic engagement – reach, benefits and empowerment (Theis & Meinzen Dick, 2016).

Expenditure under MNREGA almost doubled to Rs 1.83 lakh crore during 2017-18 to 2019-20 as compared to 2011-12 to 2013-14 periods. The government has spent "Rs 1,83,000 crore in the financial years 2017-18, 2018-19 and 2019-20 which is double the amount of Rs 92,483 crore spent in 2011- 12, 2012-13 and 2013-14." There are provisions of providing wages in case of delays in assigning work or delays in payment to beneficiaries. 26.97 lakh households were provided employment in the current fiscal up to March 9 as against 603.81 lakh households demanding employment under the scheme.

SCs and STs Participation in MGNREGA has been consistently high since the inception of the programme.



As for **women**, there is a change in the perception of what a woman can do. Women are recognised as farmers and citizens. It starts from the recognition of woman as an essential part of job-card. Over the years since the programme started, there has been a shift in women’s identity in the project villages. People now see them as mates, trainers, social mobilisers, and SHG leaders who are actively engaged in the systems. Women’s collectives



are shifting their focus from saving and credit. They started with MGNREGA and now they have quickly moved on to pension, ration, frequent visits to local bank branches and other issues. More women are now participating in monthly committee meetings, apart from the official MGNREGA functionaries, Panchayati Raj Institution (PRI) and Community-based Organisation (CBO) members.

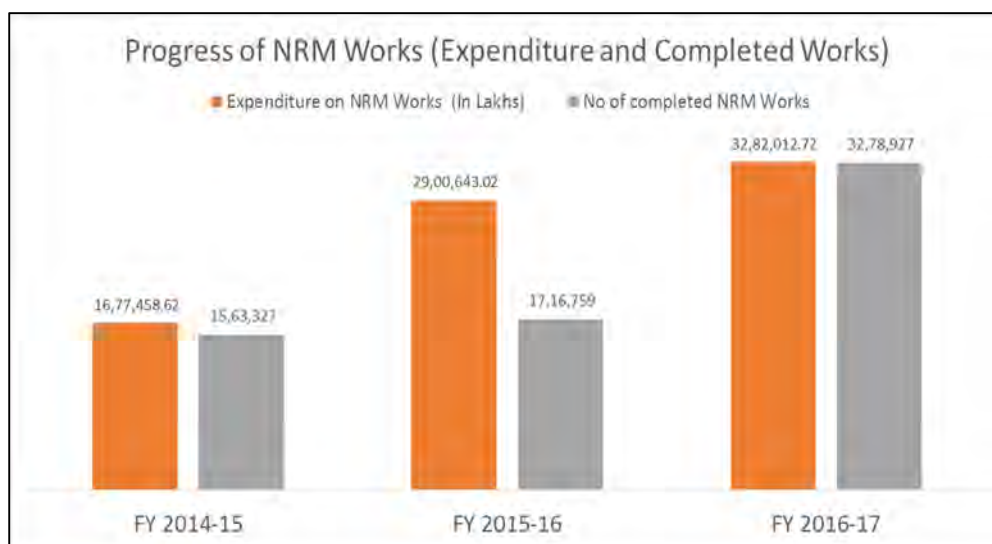
Data at the state (Rajasthan) level suggests that a majority of workers on MGNREGA sites are women, accounting consistently above 65 % on average since inception. These rates

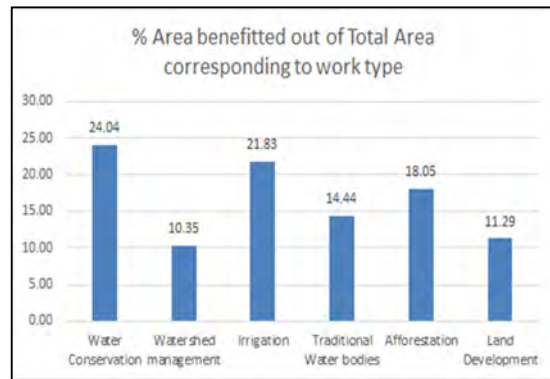
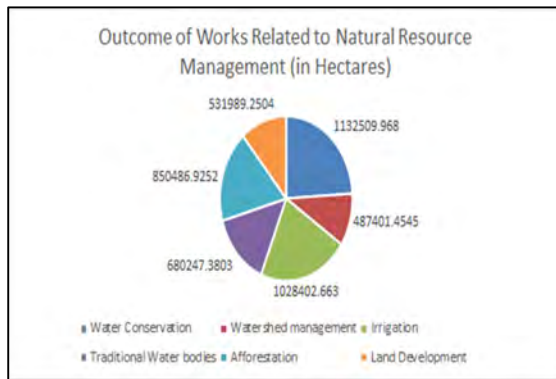
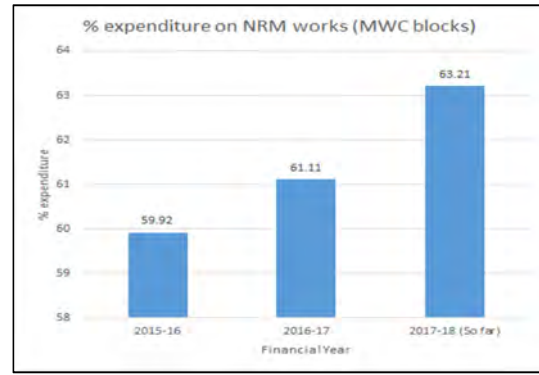
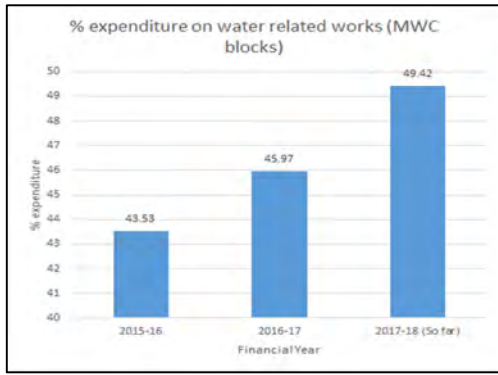
have been fairly stable over time and much higher than the mandated one-third. The proportion of women in the total rural workforce is 48.09% according to the Census of 2011; their representation in the MGNREGA workforce was 67% on average for 2015-16 to 2019-20 suggesting that the programme is drawing more women than men to its worksites. In the rural households who worked on MGNREGA only the female member participated, indicating that MGNREGA provides a household level entitlement that allows women to take advantage of the opportunity.

On migration MGNREGA deters short-term distress migration (in some cases by 22%) but not long-term migration (Das 2015, Imbert and Papp 2019, Ambasta, 2015), indicating that MGNREGA was a safety net without perhaps influencing the larger process of structural transformation.

Expenditure under MNREGA almost doubled to Rs 1.83 lakh crore during 2017-18 to 2019-20 as compared to 2011-12 to 2013-14 period. The government has spent "Rs 1,83,000 crore in the financial years 2017-18, 2018-19 and 2019-20 which is double the amount of Rs 92,483 crore spent in 2011- 12, 2012-13 and 2013-14." There are provisions of providing wages in case of delays in assigning work or delays in payment to beneficiaries. 26.97 lakh households were provided employment in the current fiscal up to March 9 as against 603.81 lakh households demanding employment under the scheme.

The Mahatma Gandhi National Rural Employment Guarantee Act (MNREGA) provides at least 100 days of wage employment in a financial year to every rural household whose adult member volunteers to do unskilled manual work.

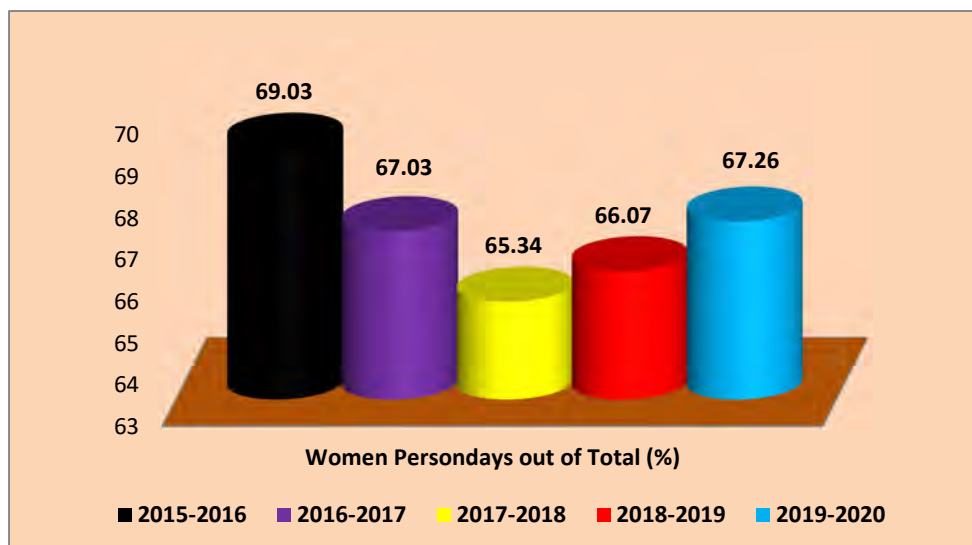
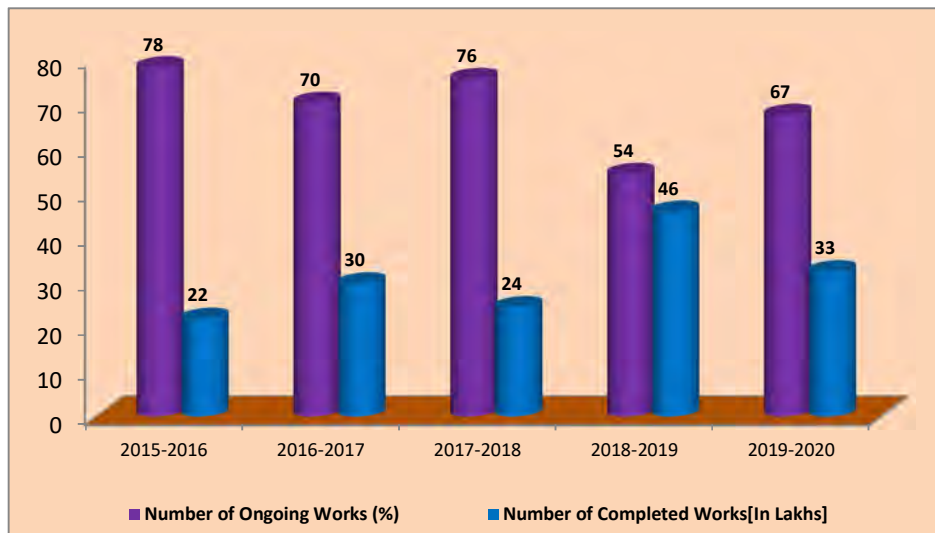
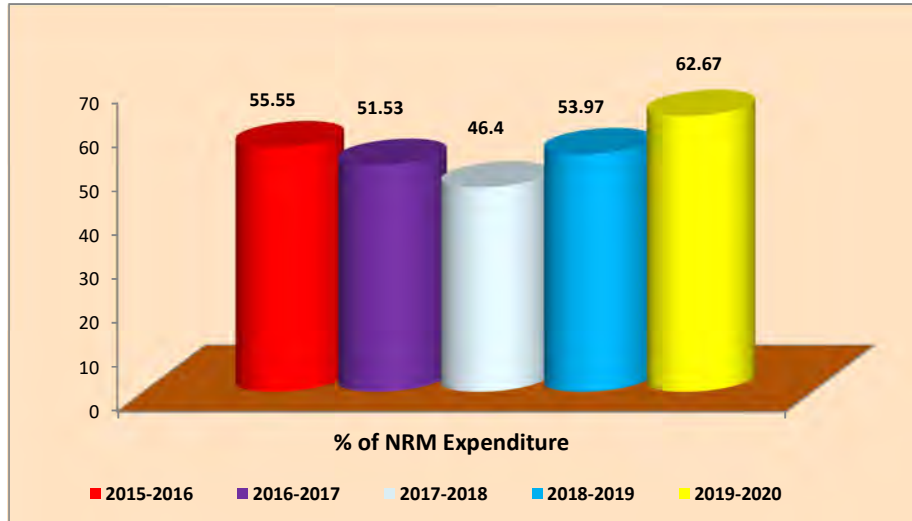


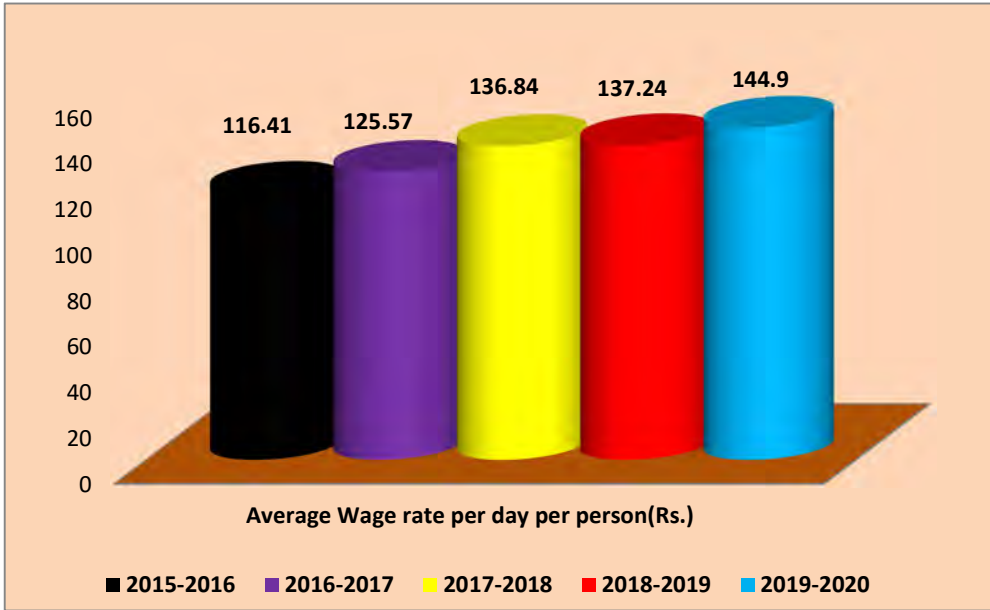
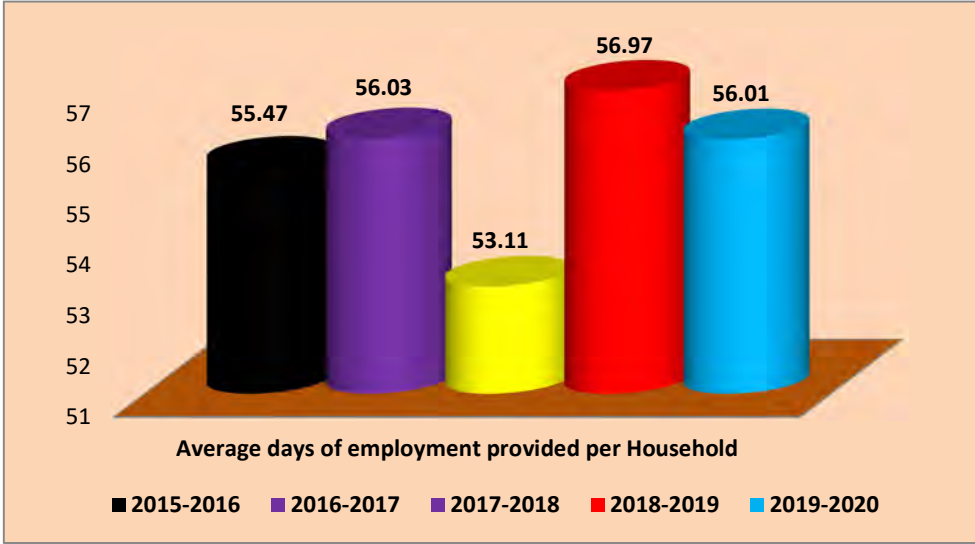


**\*Total Area Benefitted= 47.10 lakh hectares Based on data reported by States**

### NREGA Status - Rajasthan

Particulars	2019-2020	2018-2019	2017-2018	2016-2017	2015-2016
Total Households Worked[In Lakhs]	53.87	51.65	45.14	46.34	42.21
Total Individuals Worked[In Lakhs]	77.06	75.37	65.31	66.52	60.23
Persondays Generated so far[In Lakhs]	3016.97	2942.46	2397.74	2596.68	2341.21
Women Persondays out of Total (%)	67.26	66.07	65.34	67.03	69.03
SC persondays % as of total persondays	21.61	21.37	21.08	21.35	21.5
ST persondays % as of total persondays	22.25	22.31	21.49	22.49	24.35
Budget Outlay	715245.12	610251.77	527489.99	538459.18	321091.78
Total Expenditure	6,28,179.16	5,67,990.07	5,13,772.41	5,15,251.77	3,26,724.86
Expenditure on Wages	4,60,045.35	3,88,594.13	3,29,344.43	3,37,510.24	2,49,874.17
% of NRM Expenditure (Public + Individual)	62.67	53.97	46.4	51.53	55.55
% of Category B Works	83.38	82.06	81.1	65.96	49.39
% of Expenditure on Agriculture & Agriculture Allied Works	66.31	64.61	63.76	59.25	57.42
Number of On-going Works[In Lakhs]	6.58	5.13	6.45	4.38	3.25
Number of Completed Works[In Lakhs]	3.17	4.33	2.09	1.86	0.91
Total No. of Works Takenup (New+Spill Over)[In Lakhs]	9.75	9.46	8.54	6.24	4.16





## **The Project**

SPWD has been working in **Jaisamand catchment area** of Udaipur district for the last 13 years on identifying solutions for reversing the process of degradation of natural resources in the region and strengthening the local livelihood base. Along with 3 local NGOs, SPWD formed the Jaisamand consortium and took up a study in 2005 for understanding the status of the area and need for intervention. Based on the findings of the study, it was decided to take up a programme for leveraging MGNREGA resources for strengthening of local livelihood sources i.e., agriculture, animal husbandry and forestry. The consortium is working in some parts of the Jaisamand catchment area and has a good rapport with communities. The idea behind selection of the area is to attain the original objective of reversal of degradation of natural resources, build the resilience and strengthening of livelihoods in Jaisamand catchment area.

It was a historic opportunity with tremendous possibilities especially for the MGNREGA planning and its implementation. This consortium was different from any other governmental initiatives in terms of an association. It works like an umbrella under which all the organizations / partners were free to adopt their initiatives to make a plan for NREGA action plans, face the problems in hand in hand with the site solutions and emerged as a powerful force for technique and ideas.

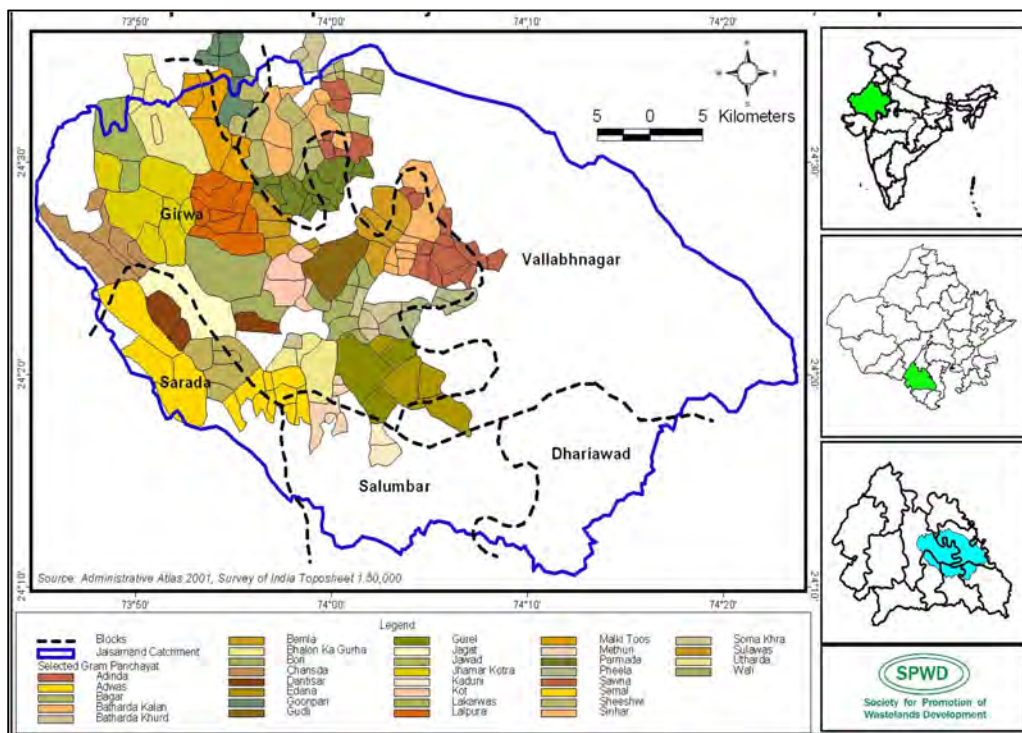
In the first phase, the work started in three Panchayats (one Panchayat each to the partners) with the support of Ford Foundation. Then it extended to three panchayats each. In the third phase, it extended to 15 Panchayats (5 panchayats each) among 73 odd villages.

The progress made by the SPWD for facilitating the partners and other CSOs for mainstreaming strategy may be described as an institutional support and adapting planning measures by GPs under the respective NGO partners. A team of partner NGOs has been formed to facilitate the GPs for INRM planning and implementation. Block level functionaries of these blocks to be associated with the programme and district unit of MGNREGA also to be an important stakeholder of the programme.

This was made possible due to several orientations, meetings and workshops conducted by the NGO partners. 73 DPRs were prepared and this preparation was supported by our partner teams for the preparation of thematic maps development with the help of web based tools and Bhuvan portal.

To strategize the project at village level the existing local institutions were strengthened and newly formed PRI teams were oriented on the NRM based activities under MGNREGA. PRI cadre was strengthened in decision making for planning NRM based works. In this way the participation of the Panchayat was increased. Workshops and Sammelans on Mainstreaming MGNREGA with NRM mobilized people being taken up along with the NRM activities of the respective areas.

## Location Map - Project Area: Jaisamand Catchment area, Udaipur; Rajasthan



### Project Goal:

Mainstream initiatives of supporting PRIs and local institutions for leveraging the flagship schemes (MGNREGA) to improve natural resources based livelihoods.

### Project Objectives:

- To provide technical inputs and backstopping to Panchayats & community groups for planning, implementation and management of flagship schemes.
- To demonstrate a decision support system at gram panchayat level for management of developmental programmes
- To liaison for integration of successful examples of management of flagship schemes and facilitate coordination among PRI, local institutions and line departments
- To promote a cadre of CSO workers to upscale the initiative taken for improving management of MGNREGA at GP level.

### Status documentation:

- The project teams proposed interventions to the village communities. Through this process the community's natural resource base was put at the forefront and its appraisal was done.
- Identifying and documenting the natural resources at the beginning of the planning process, the team also analyzed the present status of utilization of natural resources along with identification of constraints and scope of exploitation of untapped resources.

This way the unintended consequences of the typical top-down planning processes was avoided.

- Meetings held for resource mapping/sustainable resource management through resource and ownership awareness at GP level. Planning done at the Panchayat level by collating village/ hamlet level plans.
- Farmers' group and traditional leaders for resource base planning and execution had also been involved. Time to time monitoring and evaluation of progress of the initiatives was also done.
- Women were involved in decision making at village, Panchayat and coordination group meeting level as representative of SHGs in addition to the elected members. They also participated in trainings and exposure visits on institutional and technological issues.

In the course of last three years of engagement in the FF project on various aspects, SPWD produced tangible outputs which got mainstreamed by the state government such as design of exposure trips, Manual for training for work site supervisors, Application of GIS/RS/GPS tools in planning for MGNREGA & MJSA, Geo-tagging of existing assets and proposed sites, etc. Looking at the performance, state government invited SPWD to support the planning process for convergence of MGNREGA-PMKSY programme. SPWD evolved the prototype of DPR and the state government endorsed the document and presented it as model plan for 34 blocks covered under the scheme. The current scenario demand synergistic approach by consolidation of these all efforts and up-scaling to Block level to mainstream the initiatives. The DPRs have been established as a mile-stone in planning document at state and national levels. The state authorities have adopted the DPR as a modal DPR.

### **Technical response**

- In this project both modern (Remote Sensing & GIS) and local wisdom related to natural resources were used. The use of RS/GIS in the planning process brought accuracy and helped spatial as well as temporal monitoring where as traditional technologies replaced the high cost inputs i.e. field survey with conventional methods, by locally available low cost options. The project implemented in close coordination with the government line departments this helped in scaling up and also to mainstreamed the initiative. These efforts have improved the quality of implementation of government programs.
- The project teams extended their support to GP functionaries and block level officials for the successful implementation of NRM related works in select 15 GPs under MGNREGA along with implementation activities sanctioned under the MGNREGA convergence programme. The team members also facilitated necessary processes both at block and GP levels to ensure timely approval of works and execution as per the plans and designs finalized.

### **Annual Plan Preparation:**

- The most important document from the implementation point of view is the annual plan was prepared in the entire 72 project Panchayats. The project team with support of PRI members and community representatives conducted this assessment exercise and the identified the needs in light of sustainability, equity, entitlements and larger concerns.
- Project teams also provided help to Panchayat functionaries in compilation of village level plans.

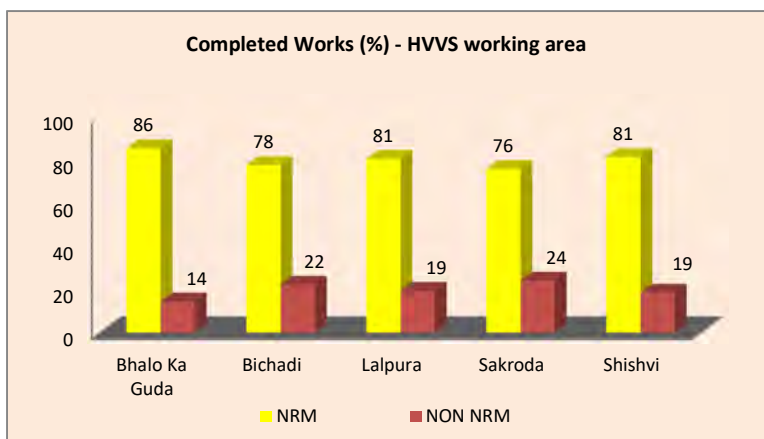
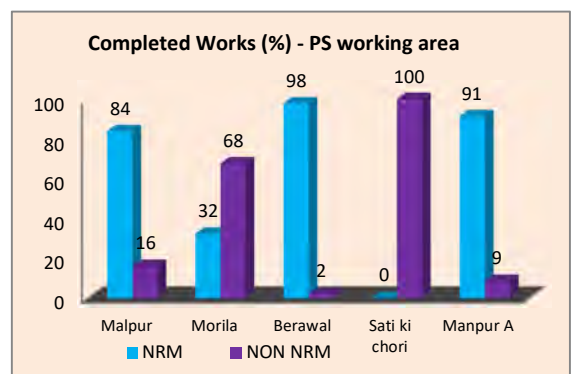
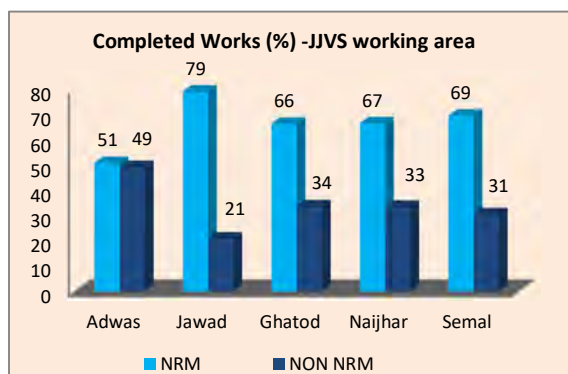
### **DPR Preparation with 'Watershed Management Approach' under MGNREGA:**

- To maximize MGNREGA benefits for environment for climate resilience watershed management approach was taken to provide benefits to common property resources. The reason behind watershed approach is prosperity saturation for marginalization is not a foundation, each of the family in village could avail benefit of MGNREGA.
- This also focusing in Master Circular point 2.5.2.3: "***Watershed management works with project approach can be taken up independently under Mahatma Gandhi NREGA, where there is no IWMP project sanctioned to provide maximum benefits of under Mahatma Gandhi NREGA***".
- Micro-watershed planning has been conceived and adopted for holistic development of natural resource based production systems. It was targeted towards conserving soil and moisture, as well as to put the lands to use according to their capabilities to improve the overall productivity of the catchment. The conservation measures and treatments varied from watershed to watershed depend upon their characteristics.
- 15 DPRs were made in the entire project Panchayats.

### **The Application of GIS and other approaches**

- Spatial information in Geographical Information Systems (GIS) environment has potential to assist in planning, implementation and monitoring of MGNREGA.
- Efforts were made to demonstrate the integration of village-level spatial and non-spatial data into a useful format, for facilitating participatory planning at gram Panchayat level. This simple and robust tool proved very useful to strengthen decision-making at local level to generate various ecological and socio-economic outputs for identifying appropriate interventions under MNREGA.
- GIS is a composite of computer based decision support tools for the integration of spatial data from different sources and for the analysis, manipulation and display of these data. It is therefore, an excellent tool for the management of large bodies of spatially extensive data with all the advantages of precision, consistency and absence of computational error. GIS can help pull together various types of disparate data such as remote sensing data, census data, and records from different administrative bodies, topographical data and field observations to assist planners and decision-makers in resource management. Creation of a spatial database is the first step in micro-level planning.

Panchayat	Works completed Till 2016-17						Total completed works
	NRM			Non-NRM			
	Commons	Individual	Total	Commons	Individual	Total	
Adwas	21	171	192	26	160	186	378
Jawad	21	194	215	21	36	57	272
Ghatod	12	289	301	21	132	153	454
Naijhar	12	123	135	31	37	68	203
Semal	12	120	132	31	27	58	190
<b>JJVS Total</b>	<b>78</b>	<b>897</b>	<b>975</b>	<b>130</b>	<b>392</b>	<b>522</b>	<b>1497</b>
Bhalo Ka Guda	25	147	172	29	0	29	201
Bichadi	15	41	56	16	0	16	72
Lalpura	29	150	179	43	0	43	222
Sakroda	19	88	107	34	0	34	141
Shishvi	21	177	198	45	0	45	243
<b>HVVS Total</b>	<b>109</b>	<b>603</b>	<b>712</b>	<b>167</b>	<b>0</b>	<b>167</b>	<b>879</b>
Malpur	29	105	134	-	-	26	160
Morila	25	87	112	-	-	233	345
Berawal	55	428	483	11	0	11	494
Sati ki chori	0	0	0	7	0	7	7
Manpur A	47	769	816	21	56	77	893
<b>PS Total</b>	<b>156</b>	<b>1389</b>	<b>1545</b>	<b>39</b>	<b>56</b>	<b>354</b>	<b>1899</b>



Panchayat	Proposed Works					
	NRM works			Non-NRM works		
	Commons	Individual	Total	Commons	Individual	Total
Adwas	27	317	344	4	0	4
Jawad	59	156	215	23	0	23
Ghatod	16	151	167	16	0	16
Naijhar	11	278	289	4	0	4
Semal	14	144	158	26	0	26
<b>JJVS Total</b>	<b>127</b>	<b>1046</b>	<b>1173</b>	<b>73</b>	<b>0</b>	<b>73</b>
Bhalo Ka Guda	50	153	203			0
Bichadi	51	0	51			0
Lalpura	58	17	75			0
Sakroda	37	0	37			0
Shishvi	52	37	89			0
<b>HVVS Total</b>	<b>248</b>	<b>207</b>	<b>455</b>	<b>0</b>	<b>0</b>	<b>0</b>
Malpur	158	207	365			82
Morila	22	168	190			35
Berawal	0	73	73			0
Sati ki chori	46	113	159	15	0	15
Manpur A	110	177	287	34	0	34
<b>PS Total</b>	<b>336</b>	<b>738</b>	<b>1074</b>	<b>49</b>	<b>0</b>	<b>166</b>

#### Outputs:

- A cadre of 50 personnel trained to provide technical backstopping to PRIs.
- 75 community institutions formed undertaking sustainable resource intensive development activities using resource/ ownership maps.
- 15 GP plans prepared collating village plans based on resource maps converging various livelihood programmes.
- 450 persons involved in appropriate natural resource allocation for improving farm based livelihoods through intensified natural resource use.
- 150 groups including SHGs, Farmers' groups and user groups get capacitated.
- 15 GPs Sarpanches, ward members, traditional village headman and Panchayat office bearers capacitated for undertaking development works.
- 36 meetings to sort out problems of communication and chalk out plan to smoothen the flow of resources and necessary compliance reports.

Village	No. of HH	Provision of MGNREGA budget		
		Labour Budget	Material Cost (@40%)	Total Provision
Bhagtalai	134	2666600	1066640	3733240
Padakhadri	319	6348100	2539240	8887340
Sakroda	1544	30725600	12290240	43015840
Talamagri	223	4437700	1775080	6212780
<b>Total</b>	<b>2220</b>	<b>44178000</b>	<b>17671200</b>	<b>61849200</b>

- The demand for work is influenced by various factors such as rain-fall, availability of alternative and remunerative employment opportunities outside MGNREGS.
- An additional 50 days of wage employment is provided over and above 100 days in the notified drought affected areas or natural calamity areas in the country on recommendation of the ministry of agriculture and farmers welfare.
- In the current financial year, till November 11, 2019, the central government has already released Rs 52,845.74 crore, or nearly 88% of the year's allocation, for MGNREGA.
- Ministry of rural development currently revises the unskilled wage rate under the Mahatma Gandhi National Rural Employment Guarantee Scheme based on consumer price index for agricultural labour (CPI-AL) every year for all states/UTs. Besides, the wages are calculated using December month index only.
- The average per day wage rate for unskilled work under the Mahatma Gandhi National Rural Employment Guarantee Scheme will rise 11 per cent from ₹199 to ₹220 for the fiscal year 2020-21. The last big increase in wages came in 2015-16, when the average wage rate was increased by 7 per cent. For 2019-20, the average wage rate was almost unchanged, with a rise of just ₹ 8 i.e. ₹191 to ₹199.

#### **Activities/Issues Addressed**

- The team of 25 persons was built by SPWD to demonstrate the model DPRs using advance scientific application tools. Apart from the technical backstopping the planning issues were strategized to involve the DPR in Action Plan. The persons were trained and oriented on *“Mainstream initiatives of PRIs and local institutions to leverage the flagship schemes (MGNREGA) for sustaining natural resource based livelihoods”*.
- Thematic maps created with the support of Bhuvan portal of Government of India was an inbuilt part of the DPR. The teams successfully prepared 15 DPRs (of 72 villages). NRM and non NRM works planned through participatory approach were accepted by 15 GPs in their Action Plans.
- 65 community institutions which were formed during the NRM base planning had raised the need base. The institutions consisted of existing 34 women SHGs, and 56 mixed groups supported in strategizing the project. Institutions were addressed to take active part in decision making and holding gatherings to raise issues on the works. Constituting Ward Panchs and community leaders, people were mobilized through the local institutions. 12 resource maps prepared for each of 15 GPs through PRA and along with explaining geo-tagging of planned work sites.
- 15 GPs were addressed to mainstream MGNREGA with NRM based works in the villages. To approach the Panchayats regular meetings were organised with the Panchayat Committee. A continuous dialogue was maintained with Gram Sarpanch and Secretary to influence on the work portion of 65% to be accomplished for NRM based activities. Ward Panch and Sarpach took active role in supporting the plan.
- 32 trainings were organized on *“livelihood allocation and sustainable use of natural resources and livelihood practices”* which were attended by 624 people from

organisations and Panchayat level. During the trainings they learned to document the existing forms of natural resources and their uses by the people. The authorized facts and figures were to be fetched from primary and secondary data sources. Participants were trained on GIS based planning was made hands on to deal with the respective situations. 23 Sammelan were organised to demonstrate the role of DPR in technical backstopping and participatory planning.

- 16 Trainings of Programme Staff Capacity building and one education Tour in Chittorgarh was organized. Motivated people asked for the earlier work inclusion from the Panchayat.
- 15 Capacity building trainings of Panchayats were also carried out in the same way. Sarpanch through Sammelan and meetings understood the NRM based planning process with the support of GIS tool.
- 20 Panchayat Sammelan were held under Coordination meeting involving PRI, govt. officials, local institutions.

### **Indicators of Success**

1. Regeneration of degraded area in 15000 ha land.
2. Productivity enhancement of Agriculture Land of 10000 households.
3. 750 Water Resources conservation and harvesting structures constructed.
4. Efficient use of water through introduction of Irrigation Services in 3750 households.
5. Functioning of 375 SHGs and related institutional arrangements.
6. 175 SHGs link to banks for promotion of financial inclusion practices.
7. 30,000 households practicing sustainable resource use.
8. 75 Panchayats practicing Local level Decision making for the flagship programmes.
9. 50% increase in leveraged government programme fund in 75 Panchayats.
10. 50% increase in MGNREGS for NR based programmes in 375 villages.
11. Sustainable increased production through intensification in 30000 households.
12. 50% increase in production and reduction in input cost at HH level through 375 village institutions.
13. Technical support on issuance of government.
14. Mainstreaming adopted by 1 district.
15. Initiation of Replication/Scaling Up in 5 Districts.

### **Actual Results to Date**

- Proposal for regeneration of about 6000 hectares of degraded area has been prepared and passed by the gram sabha and it was taken up during 2019.
- Activities for productivity enhancement of Agriculture Land of about 6000 households are part of annual action plan.
- 100 sites for water conservation and harvesting structures have been identified.

- 65 SHGs started working to address water needs and making decisions related to NRM mapping.
- 34 Panchayats practicing local level decision making with a cadre of trained JE and mates. NRM mapping carried out by the Panchayats.
- 23 Panchayats were directly involved in participatory planning of NRM based MGNREGA planning. During the course of time Panchayats were made the focal points to disseminate the planning process. The NGO partners supported the PRIs in understanding the NRM based planning on the principle of watershed treatment. This was followed by the mapping of natural resources through GIS technique. Panchayats understood the role of scientific planning to ensure the authentication of data and transparency. During the Gram Sabha and Sammelan the demonstration of DPR captured the interest of community as it appeared more justifiable to the need of works. Panchayats ensured their participation by encouraging more such type of works and assure acceptance of the DPR in Action Plan.
- 20% increase in leveraged government programme fund in 75 Panchayats.
- Establishment of functioning village institutions and GPs as well.
- The decision support system harnessed a wide range of members from local institutions and PRIs. The institution representatives such as Ward Panch, Sarpanch, Secreatry, JE, mates and local group leaders understood on planning and supervising the work. They supported resource mapping. As the part of decision support system the representatives focused on Soil and Water Conservation across slopes, land enhancement and animal husbandry. Group leaders captured NRM based activities.
- A cadre of CSO workers to upscale MGNREGA activities was promoted. 23 CSOs, 5 government bodies and 25 PRIs involved shared their experiences and raised opinions on MGNREGA. A consensus was evolved to promote the NRM based MGNREGA planning through technical backstopping from the Universities and inputs from experts. The cadre of CSOs increased the outreach of the project in all districts of Rajasthan.
- PRI, local institutions and line departments started liaison among themselves through the meeting platforms created at GP level.
- Increased participation of development actors and better convergence of development programmes.
- Strong community institutions practicing participatory decision making.
- Evolution of a model for implementing successful natural resource based livelihood programmes.
- Scaling up of successful interventions through demonstration effects.
- Extended technical support to central and state government for localizing the Mission Water Conservation.
- Mainstreaming adopted by the central and state government. Initiation of Replication/Scaling Up in all Districts of the state.

Sl. No.	Activities	HVVS	Remarks	JJVS	Remarks	PS	Remarks
1	Team Building and capacitating for implementation		All 5 DPRs have been shared at village and GP levels and submitted to respective GPs.		All 5 DPRs have been shared at village and GP levels and submitted to respective GPs.		All 5 DPRs have been shared at village and GP levels and submitted to respective GPs.
2	Promoting Institutions for management of development initiatives						
3	Planning for implementation at GP level	5 GPs DPRs prepared		5 GPs DPRs prepared			
4	Training and capacity building of staff and lead farmers	(1)5 STAFF TRG, 150 SHG members lead farmers were given training. (2)Total 537 male and 2838 women participated in different trainings and meetings organised by HVVS.		(1) 5 Staff trainings were given and 16 members were also taken for exposure to Kakroliya ghati GP at Bhilwara. (2)Total 262 male and 265 women participated in different trainings and meetings organised by JJVS.		(1) Total 459 male and 521 women participated in different trainings and meetings organised by PS.	
5	Capacity building of various village institutions	240 SHG & 74 CBO were called for the trainings of MGNREG basics and plan preparations.		No. of ward sabhas were called and 1377 persons attended these ward sabhas.			
6	Capacity building of PRIs	20 Trainings imparted of PRIs		5 Panchayat sammelan organised where 724 persons participated		5 Panchayat sammelan organised	
7	Coordination meeting involving PRIs, Govt. officials, Local institutions	6 meetings were organised.		5 Panchayat Summits were organised in which 81 persons from PRI participated		5 Panchayat level sammelans were organised	

Project Attributes	Impact	Unit	Measure	Remarks
<b>Physical and financial assets</b>	Regeneration of degraded areas	Hectare	155 Hac.	Pastureland Development & Land levelling
	Productivity enhancement of Agricultural land	Households	120 HH	42 Hac. Agricultural Land & 180 Qt. Productivity
	Water resources conservation and harvesting	Structures	4 structure	5 GPs WC & WH
	Efficient use of water through introduction of irrigation services	Households	932 HH	5 GPs WHS works
	Functioning SHGs and related Institutional arrangements	Number	145 SHGs & 39 CBOs	5 GPs SHGs & CBOs
	SHGs linked to bank for promotion of financial inclusion practices	Number	108 SHGs	Group loaning from RMGB of Rs. 60 Lakhs
<b>Human Assets</b>	Practicing sustainable resource use	Villages	26 Villages	People are using it in sustainable manner
	Local level decision making for the flagship programmes	Households	2018 HH	SHGs , CBOs & PRI members do discuss now for the schemes & wider coverage
<b>Social Capital and people's empowerment</b>	50% increase in leveraged government programme fund	Panchayats	5 GPs	N/A
	50% increase in MGNRGS for NR based programmes	Panchayats	5 GPs	49.5% achieved
<b>Natural resource base</b>	Sustainable increased production through intensification	Villages		
<b>Natural resource based production systems</b>	50% increase in production and reduction in input cost at HH level	Households	1022 HH	Over 1000 HHs have been covered from 26 villages.

**Use of Machines<sup>1</sup>**

Para 22 of Schedule-1, Mahatma Gandhi NREGA, lays down that “As far as practicable, works executed by the programme implementing agencies shall be performed by using manual labour and no labour displacing machines shall be used”. However, there may be activities in executing works which cannot be carried out by manual labour, where use of machine may become essential for maintaining the quality and durability of works. A suggested list of machines which can be used under Mahatma Gandhi NREGA is shown below:

S. No.	Name of work as per para 4.(1) of Schedule-1, Mahatma Gandhi NREGA	Name Of Activity	Name Of Machine(s) that can be used
1	II. Category B: (i) Improving productivity of lands, dug wells	i) The excavation/ deepening of dug well	i) Pump set for dewatering, ii) Tractor mounted Compressor hammer for rocky strata, iii) Lifting device/ Chain pulley (motorised)
2	IV. Category D: (ii) Road connectivity	i) Compaction of earthen embankment in 15 to 23 cm layers, at optimum moisture content	i) Power Roller ii) Trailer mounted water browser
		ii) Compaction of moorum/ gravel in 15 to 20 cm layers at optimum moisture content	i) Static smooth wheeled roller of 8 - 20 ton weight. ii) Trailer mounted water browser
		iii) Mixing of cement concrete.	i) Mechanical Mixer
		iv) Compaction of cement concrete	i) Mechanical Vibrator
		v) Cutting of joint in Cement Concrete	i) Concrete joint cutter
3	IV. Category D: (v) Construction of building	i) RCC Footing, Column, Beam and Roof	i) Mechanical mixer and Mechanical vibrator.
4	IV. Category D: (vii) Production of building materials	i) For compressing Compressed Stabilised Earthen Blocks (CSEB)	i) Machine for CSEB, such as Aurum Press, Cinvaram, Terstara, Mardini, TARA-Balram, etc.
		ii) For production of fly ash bricks/ blocks	ii) Pan mixer & Brick/ block making machine (Vibratory table/ Hydraulic press)
5	I. Category A: (v) Afforestation, tree plantation in common and forest lands	i) Digging pits for plantation, which cannot be done manually in Usar areas, where there is Kankar pan and soil is alkaline with pH more than 8.5.	i) Mechanical Auger

<sup>1</sup> Annual Master Circular 2017-18, MoRD; GOI; PP 20-21

## 7.2.2 Natural Resource Management Works - Mission Water Conservation (MWC)<sup>2</sup>

7.2.2.1 A convergence Framework for scientific planning and execution of water management works with the use of latest technology has been mandated in consultation with and agreement of the Ministry of Water Resources, River Development & Ganga Rejuvenation and the Ministry of Agriculture and Farmers' Welfare. In upcoming years i.e. FY 2017-18 and onwards, focus will be given to the 2264 Blocks identified under MWC.

7.2.2.2 In pursuance of Schedule-I of Mahatma Gandhi NREGA, 155 kinds of works/ activities have been identified as permissible works, of which 100 kinds of works relate to NRM, alone and out of the 100 NRM works, 71 are water related. 44 numbers of works out of the 155 works are related to individual asset creation.

7.2.2.3 The works taken up in MGNREGS should change from taking up individual, standalone works in a typical „relief works mode“ to an INRM perspective. Planned and systematic development of land and harnessing of rainwater following watershed principles should become the central focus of MGNREGS work across the country to sustainably enhance farm productivity and income of poor people. Even the works on private lands should be taken up following the principles of watershed management in an integrated manner.

7.2.2.4 Technological support shall be taken from National Remote Sensing Centre, ISRO for identification and planning of watersheds and monitoring of each and every activity undertaken and missed out (in earlier plans).

7.2.2.5 Central Ground Water Board, a storehouse of information related to groundwater resources and having technical expertise available at regional/ State level on designs and structures suitable/ required for water stressed blocks based on their geomorphological and climatic zone, should be consulted for planning, monitoring and execution of structures impacting ground water resource.

7.2.2.6 Watershed management works can be taken up independently under Mahatma Gandhi NREGA where there is no IWMP project sanctioned/proposed, subject to the conditions that:

- i. Watershed Management works will be taken up only after a comprehensive assessment of the entire watershed in the GP and shall address all issues of soil erosion, rain water retention and afforestation.
- ii. Stand-alone works in the above category without a comprehensive watershed plan shall not be permitted.
- iii. Efforts to complete structures in one working season will be made rather than carrying on works for many years.
- iv. The comprehensive watershed plan shall be prepared in accordance with the concepts of ridge to valley treatment. It is recommended to use the satellite imagery for this planning work.
- v. For selection of the appropriate sites and preparing the above plans, the Engineers/Technical Assistants and Mates of MGNREGS at Block and GP level would be trained and supported by the State Level Nodal Agency (SLNA) of IWMP and technical personnels of WCDC, the cost of which would be met by the Administrative cost of MGNREGS.
- vi. Watershed works will preferably be taken up with cluster approach.

**7.2.2.7 Watershed management works under MGNREGA in convergence with IWMP- wherever IWMP project is already sanctioned:** It must be ensured that the material intensive works are taken up under IWMP, and all the other labour intensive NRM works are done under MGNREGS. Under no circumstance there shall be duplication or double counting of works. It shall be the responsibility of the Programme Officers of MGNREGS and IWMP to ensure this convergence and follow all non-negotiables and processes of MGNREGA.

7.2.2.8 Areas where DPR needs to be revisited due to inadequacy, the **eDPRs** of these watersheds should be used.

7.2.2.9 **New IWMP projects**-In all future IWMP projects where DPRs of IWMP will be prepared, the NRM activities to be taken up through convergence with MGNREGA need to be included and clearly indicated in the DPR in consultation with concerned officials of MGNREGS, watershed committees and Gram Sabha. The technical resources of Watershed areas should be moved in these areas to prepare the DPRs. CSRs can be encouraged to provide technical resources for these areas so that good DPRs may be prepared and effective monitoring is done.

---

<sup>2</sup> Annual Master Circular 2017-18, MoRD; GOI; PP 24-25